

ESTUDIO op. 25 N° 1 de Chopin

(Adaptación para dos guitarras)

ÉTUDE op. 25 N°1 de Chopin

(Adaptation pour deux guitares)

(ARR. E. PUJOL)

Allegro sostenuto M (♩ = 104)

Guita 1.a

Guita 2.a

*p* *mp* *im*

*p* *im* *um*

C) II

C) v

(5)

C) II

C) v

C) II

C) IV

II

Handwritten musical score for two staves. The top staff is in treble clef with a key signature of two sharps (F# and C#). It features a series of sixteenth-note runs with fingerings (1-4) and a circled number 3. The bottom staff is in bass clef with a key signature of two sharps. It features a series of sixteenth-note runs with fingerings (1-4). Above the staves are handwritten labels:  $C_B\} II$  IV and  $C_B\} II$ . Dynamic markings *f* and *p* are present.

Handwritten musical score for two staves. The top staff is in treble clef with a key signature of two sharps. It features a series of sixteenth-note runs with fingerings (1-4) and a circled number 10. The bottom staff is in bass clef with a key signature of two sharps. It features a series of sixteenth-note runs with fingerings (1-4). Above the staves are handwritten labels:  $C_B\} II$  and  $C_B\} II$ . Dynamic markings *p* and *f* are present.

Handwritten musical score for two staves. The top staff is in treble clef with a key signature of two sharps. It features a series of sixteenth-note runs with fingerings (1-4) and a circled number 10. The bottom staff is in bass clef with a key signature of two sharps. It features a series of sixteenth-note runs with fingerings (1-4). Above the staves are handwritten labels:  $C_B\} v$  and  $C_B\} II$ .

C<sub>B</sub>) VII IX IV (15)

C<sub>B</sub>) II C<sub>B</sub>) IV

C<sub>B</sub>) IV I

C<sub>B</sub>) IV *p i m p m i*

C<sub>B</sub>) IV

C<sub>B</sub>) II

The image shows a musical score for the song "The Rose Tree". It consists of two staves. The top staff is for the vocal melody, written in treble clef with a key signature of one sharp (F#). The melody is a simple, repetitive tune. The bottom staff is for the piano accompaniment, written in treble clef with a key signature of one sharp. It features a simple harmonic accompaniment. The score is marked with a circled "20" above the first measure of the piano part. The title "The Rose Tree" is written in a decorative font at the top right of the page.

The image shows a musical score for the song "The Rose Tree". It consists of two systems of music. The first system is for the vocal part, written in treble clef with a key signature of one sharp (F#). The melody is in 4/4 time and features a series of eighth-note runs. Above the staff, the chord progression is indicated as C (B) IV, VII, VI, IV, V. The second system is for the piano accompaniment, also in treble clef with the same key signature. It features a steady eighth-note accompaniment pattern. Above the staff, the chord progression is indicated as C (B) I, followed by the lyrics "p i a n o". The score is written on two staves, with the vocal line on top and the piano accompaniment on the bottom.

C  
B) VI — IV — V — VI — IV — V — VI —

(25)

C) VI \_\_\_\_\_ VIII \_\_\_\_\_ C) VII \_\_\_\_\_



*cresc.*

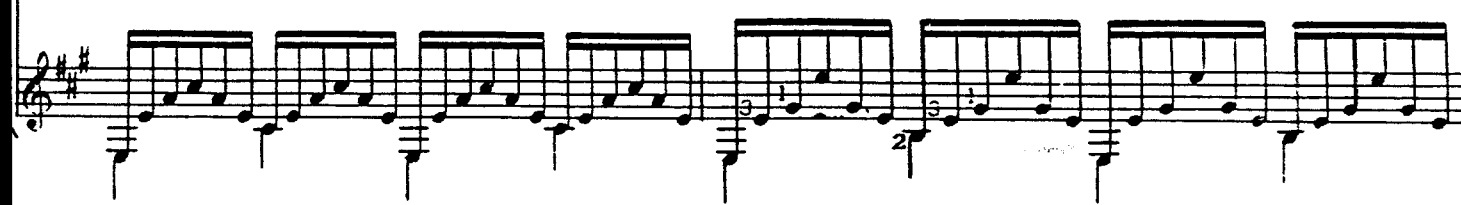
*f*



C) V \_\_\_\_\_

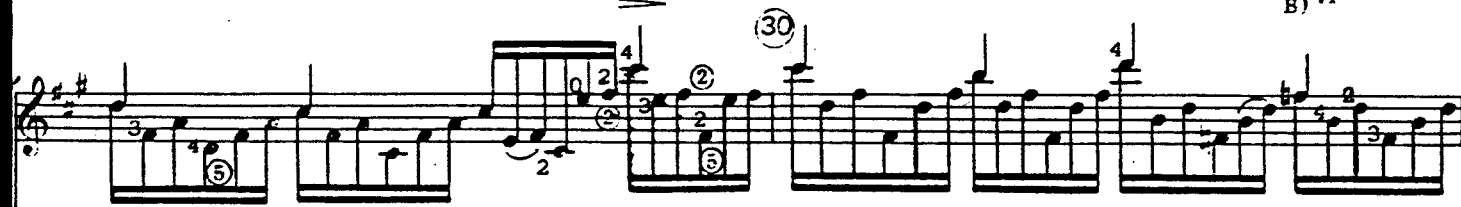


C) II \_\_\_\_\_



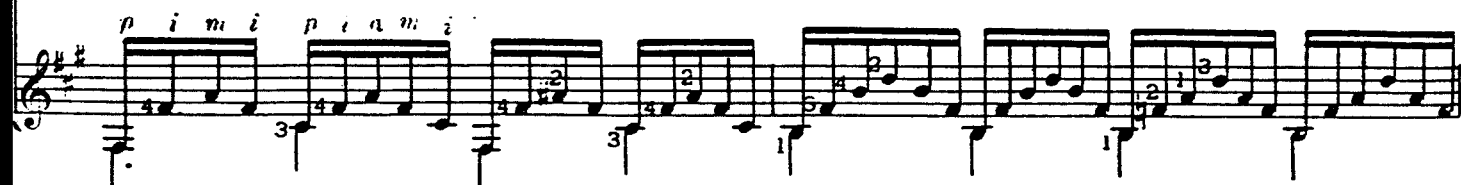
C) II \_\_\_\_\_

C) VI



C) II \_\_\_\_\_

C) II \_\_\_\_\_



C) VII \_\_\_\_\_ C) II \_\_\_\_\_

*p* *cresc.*

C) II \_\_\_\_\_

C) IV \_\_\_\_\_ v \_\_\_\_\_ (35)

*f*

C) II \_\_\_\_\_ IV \_\_\_\_\_ (5)

C) IV \_\_\_\_\_ *a tempo*

*rit.* *fz p*

dim. smorzando

*leggerissimo*

XII XXII XII

45

*pp*

C<sub>B</sub>} II

XXII XII XXII XII

XII XII XII XII

C<sub>B</sub>} XIV

C<sub>B</sub>} II

50

*ppp*

C<sub>B</sub>} II